

Танец Козелкова  
с друзьями

29

The Dance of Kozelkov  
and His Friends

155

479 Allegretto

Measures 479-480, Allegretto tempo. The music is in 2/4 time with a key signature of three flats (B-flat, E-flat, A-flat). Measure 479 begins with a forte (*f*) dynamic and features a rapid sixteenth-note melody in the right hand and a bass line with eighth notes in the left hand. Measure 480 continues the melody and includes a fermata over the final note.

Andante

480

Measures 480-481, Andante tempo. The music is in 2/4 time with a key signature of three flats. Measure 480 starts with a forte (*f*) dynamic and a marking of *espr. molto*. The right hand has a melodic line with slurs and accents, while the left hand provides a steady bass line. Measure 481 continues the melodic development in the right hand.

Measures 481-482, Andante tempo. The music continues in 2/4 time with three flats. Measure 481 shows the continuation of the melodic line in the right hand. Measure 482 features a more complex texture with multiple voices in the right hand and a sustained bass line.

481

Measures 481-482, Andante tempo. The music continues in 2/4 time with three flats. Measure 481 begins with a mezzo-piano (*mp*) dynamic. The right hand features a series of chords and moving lines, while the left hand has a steady bass line. Measure 482 continues the harmonic progression.

DSCH



rit.  
cresc.

Measures 481-482. Treble and bass staves. Treble staff has a melodic line with a trill in measure 482. Bass staff has a steady eighth-note accompaniment. Dynamics include *rit.* and *cresc.*

## 482 Più mosso

Measures 483-484. Treble and bass staves. Treble staff has a melodic line with a trill in measure 484. Bass staff has a steady eighth-note accompaniment. Dynamics include *f*.

## 483 Più mosso

Measures 485-486. Treble and bass staves. Treble staff has a melodic line with a trill in measure 486. Bass staff has a steady eighth-note accompaniment. Dynamics include *f* and *p*.

Measures 487-488. Treble and bass staves. Treble staff has a melodic line with a trill in measure 488. Bass staff has a steady eighth-note accompaniment.

## 484

Measures 489-490. Treble and bass staves. Treble staff has a melodic line with a trill in measure 490. Bass staff has a steady eighth-note accompaniment. Dynamics include *ff* and *f espr.*

Measures 491-492. Treble and bass staves. Treble staff has a melodic line with a trill in measure 492. Bass staff has a steady eighth-note accompaniment.



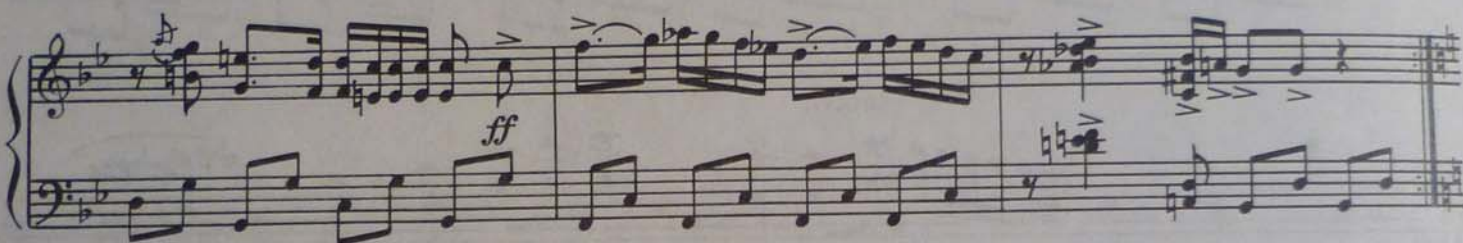




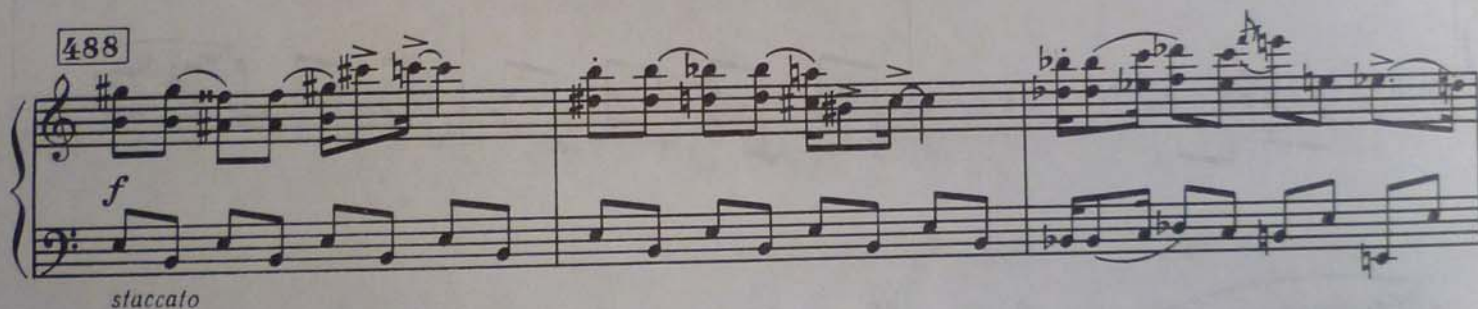
## 486 Allegro



487



488



489

