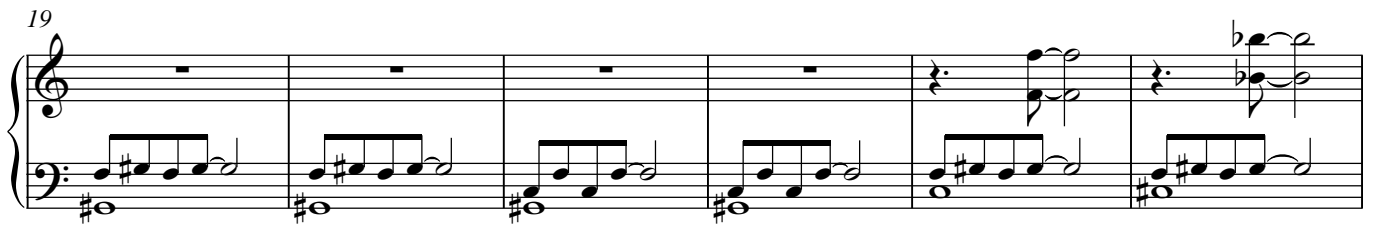
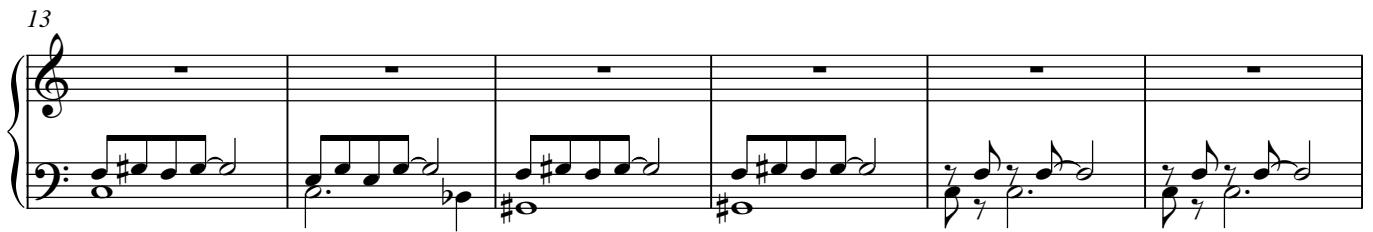
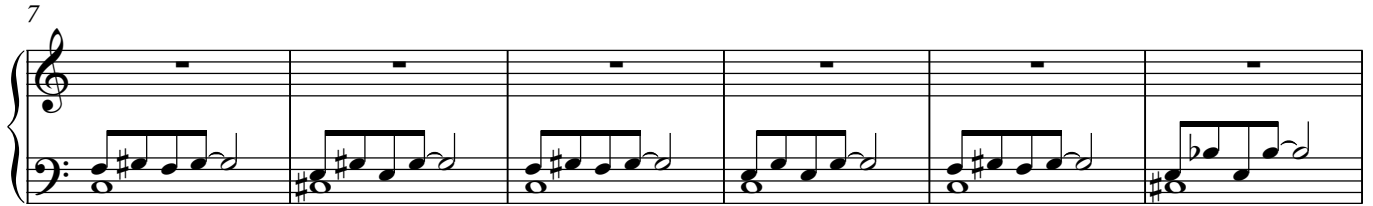


# Etude n°5

Philip Glass



40

Measures 40-44. Treble clef: whole notes with accidentals (F#, C#, G#). Bass clef: eighth notes with accidentals (F#, C#, G#).

45

Measures 45-50. Treble clef: chords and whole notes. Bass clef: eighth notes with accidentals (F#, C#, G#).

51

Measures 51-56. Treble clef: chords and whole notes. Bass clef: eighth notes with accidentals (F#, C#, G#).

57

Measures 57-61. Treble clef: chords and whole notes. Bass clef: eighth notes with accidentals (F#, C#, G#).

62

Measures 62-66. Treble clef: chords and whole notes. Bass clef: eighth notes with accidentals (F#, C#, G#).

etc... etc... ...