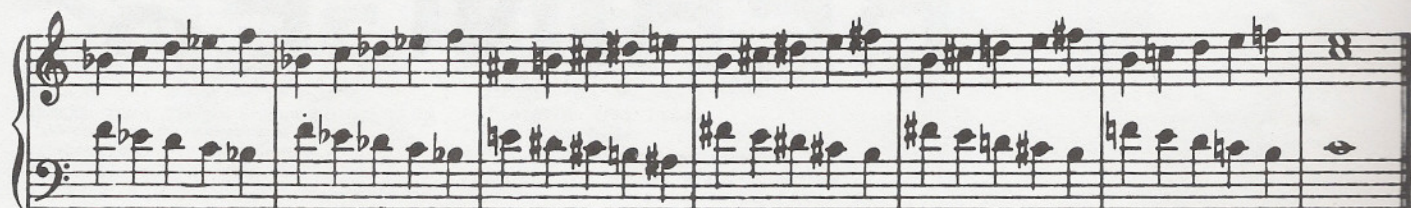
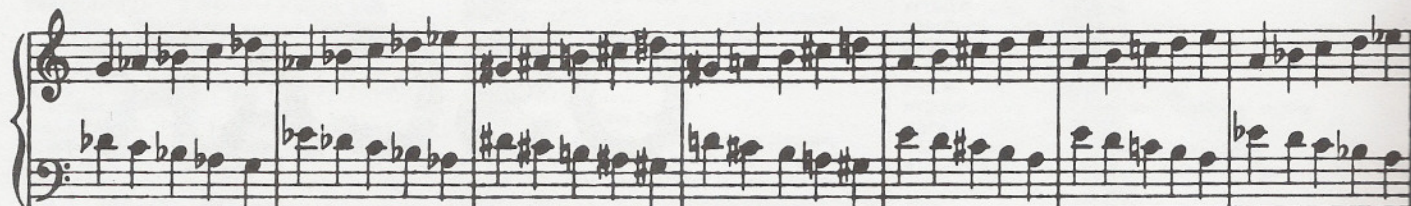
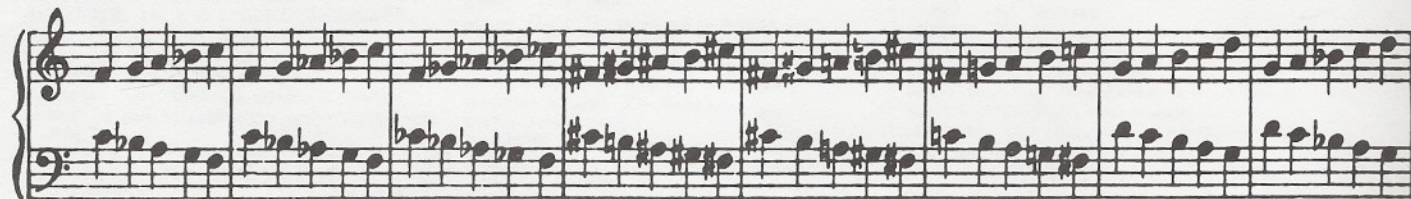
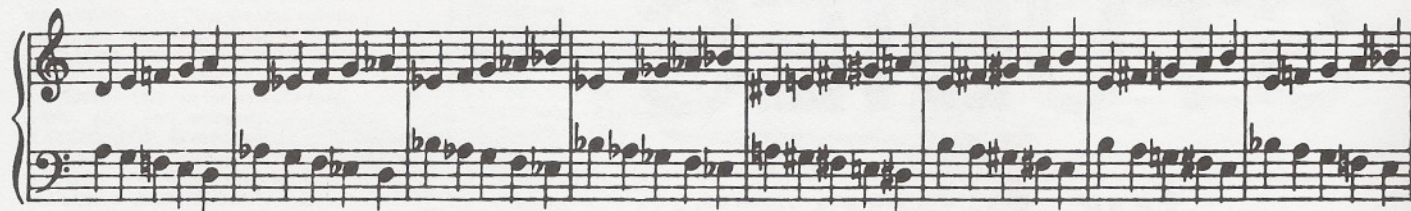
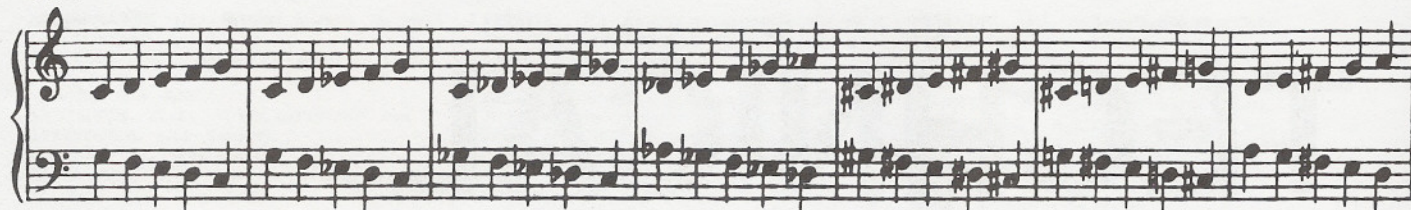


Modulatory Examples.

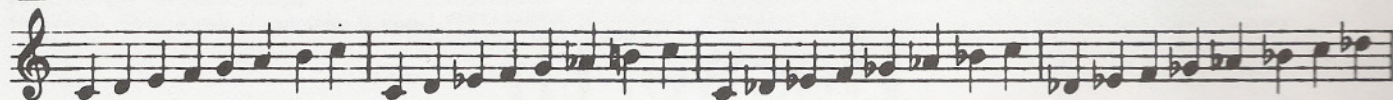
Exemplos de Modulações.

Exemples de Modulation.

A



B



A handwritten musical score for the song 'The Rose Tree'. The score is written on six staves, each with a treble clef. The key signature is one flat (B-flat), and the time signature is 4/4. The melody is written in a simple, folk-like style with eighth and quarter notes. The lyrics are written below the staves, aligned with the notes. The song ends with a double bar line and a final note. The handwriting is in ink on aged paper.

[illegible]