



SCHLUMMERLIED.



CLAVIER-STÜCK

VON

ROBERT SCHUMANN.

Aus Op. 124.

Pr. f 0.70.



Haag,

F. J. Weygand & Comp.,

HOF-MUSIKALIEN-HANDLUNG UND DER KÖNIGLICHEN MUSIKSCHULE
HANDLUNG

IN
Pianos und Orgeln Alexandre.



SCHLUMMERLIED.

von

ROBERT SCHUMANN.

Allegretto.

aus Op. 124.

PIANO.

Mit Pedal.

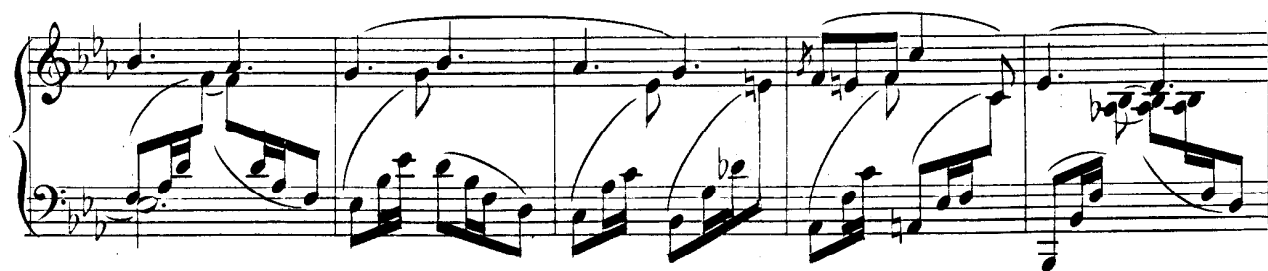
(3)

Sheet music for piano, featuring five systems of staves. The music is in a key with two flats (B-flat and E-flat) and a 3/4 time signature. The first system includes the tempo marking *in tempo.* and the instruction *ritardando.* The second system includes the instruction *Ped.* The third system includes the dynamic marking *p*. The fourth system includes the dynamic marking *pp*. The fifth system includes the dynamic marking *mf*. The page number 1678. is printed at the bottom center.



1678.

(4)



ritardando.

(5)

in tempo.

Ped.