

# Rag fantaisie

$\text{♩} = 90$

5

9

13

17 1.

21

25

Measures 25-28 of a musical score in G major. The right hand features a melody with eighth and sixteenth notes, while the left hand provides a steady bass line with eighth notes. Measure 28 ends with a repeat sign.

29

Measures 29-32 of a musical score in G major. The right hand continues the melodic line with various intervals, and the left hand maintains the bass line. Measure 32 ends with a repeat sign.

33

Measures 33-36 of a musical score in G major. The right hand features a more active melody with sixteenth notes, and the left hand continues the bass line. Measure 36 ends with a repeat sign.

37 1.

Measures 37-40 of a musical score in G major. Measure 37 begins with a first ending bracket labeled '1.'. The right hand has a melodic line with eighth notes, and the left hand has a bass line. Measure 40 ends with a repeat sign.

41

Measures 41-44 of a musical score in G major. The right hand features a complex melodic line with many sixteenth notes, and the left hand has a bass line. Measure 44 ends with a repeat sign.

45

Measures 45-48 of a musical score in G major. The piece features a complex, flowing melody in the right hand with many sixteenth and thirty-second notes, and a more rhythmic accompaniment in the left hand. A large slur is placed under the first three measures of the left hand. The key signature has one sharp (F#).

49

Measures 49-52 of the musical score. The right hand continues with a melodic line, while the left hand provides a steady accompaniment with eighth and sixteenth notes. The key signature remains G major.

53

Measures 53-56 of the musical score. The right hand features a more active melodic line with some triplets. The left hand continues its accompaniment. The key signature remains G major.

57

Measures 57-60 of the musical score. The right hand has a melodic line with some rests. The left hand continues with a consistent accompaniment. The key signature remains G major.

61

Measures 61-64 of the musical score. The right hand features a melodic line with some rests. The left hand continues with a consistent accompaniment. The key signature changes to G minor (one sharp and two flats) in the final measure.

65



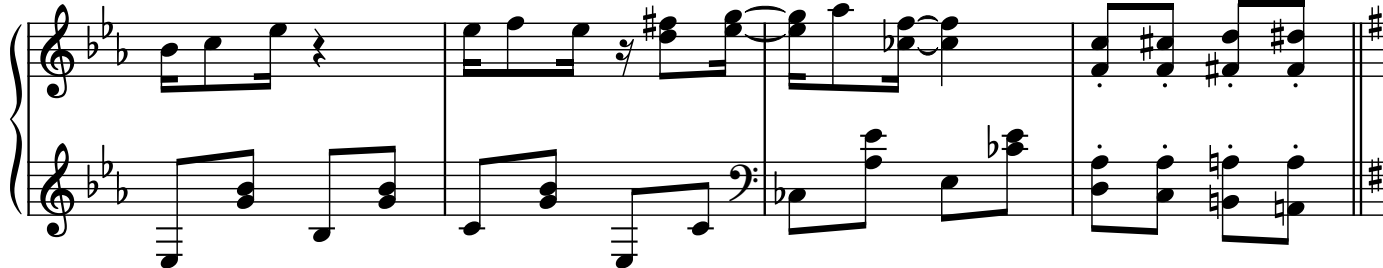
69



73



77



81

Measures 81-84 of a musical score in G major. The right hand features a melody with eighth and sixteenth notes, including triplets and slurs. The left hand provides a bass line with eighth and sixteenth notes. Measure 84 ends with a whole rest in the right hand.

85

Measures 85-88 of a musical score in G major. The right hand continues the melodic line with eighth and sixteenth notes. The left hand has a bass line with eighth and sixteenth notes. Measure 88 ends with a whole rest in the right hand.

89

Measures 89-92 of a musical score in G major. The right hand features a melody with eighth and sixteenth notes. The left hand provides a bass line with eighth and sixteenth notes. Measure 92 ends with a whole rest in the right hand.

93

Measures 93-96 of a musical score in G major. The right hand features a melody with eighth and sixteenth notes, including triplets and slurs. The left hand provides a bass line with eighth and sixteenth notes. Measure 96 ends with a double bar line.