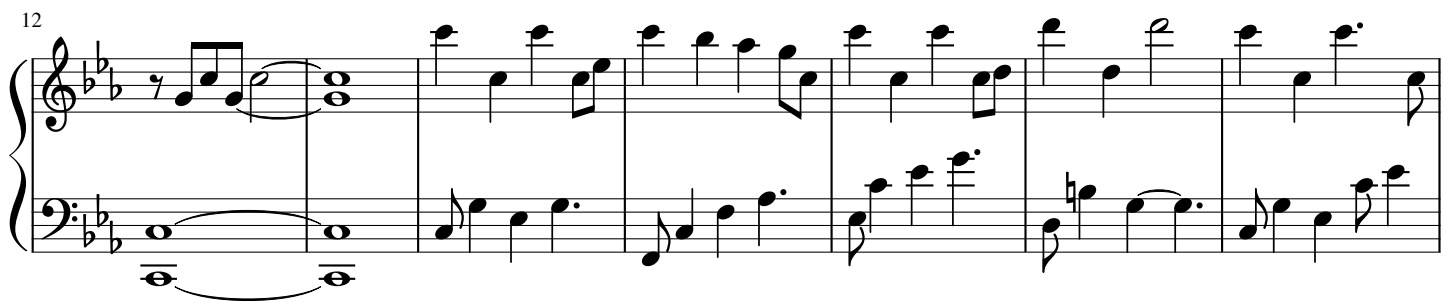
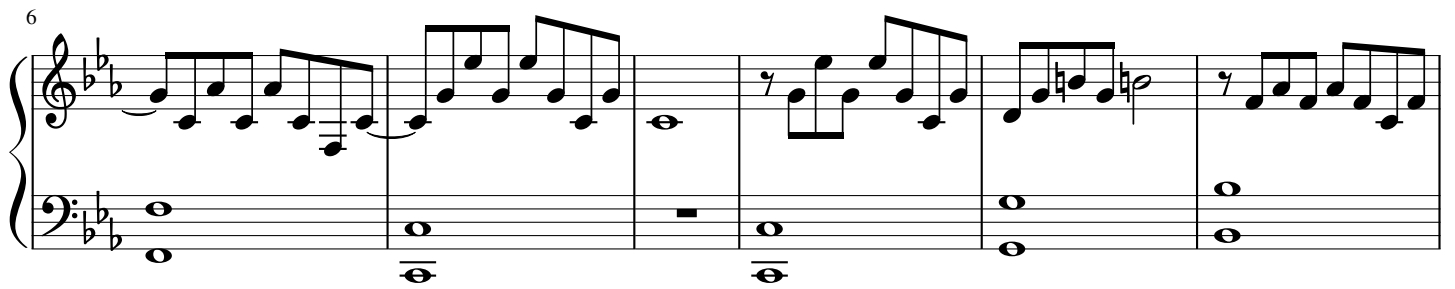
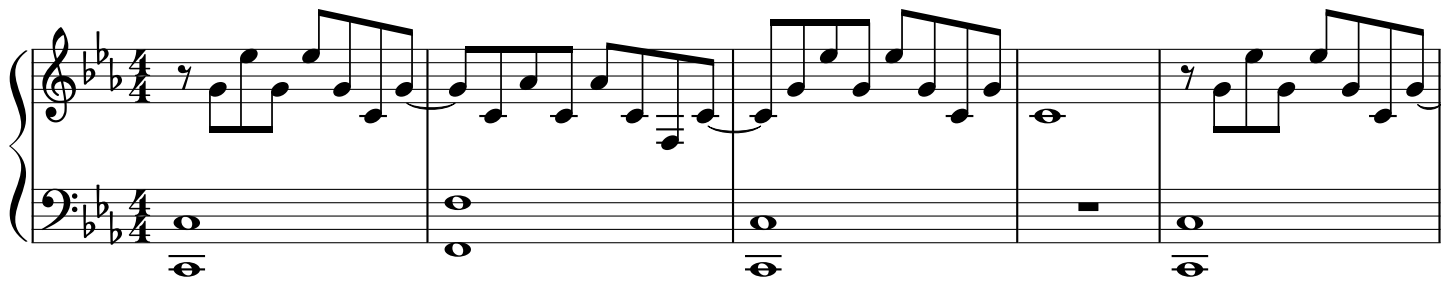


# Light of the seven

Ramin Djawadi



31

System 1 (Measures 31-36): Treble staff features chords and eighth-note patterns. Bass staff features eighth-note runs.

37

System 2 (Measures 37-42): Treble staff features chords and eighth-note patterns. Bass staff features eighth-note runs.

43

System 3 (Measures 43-48): Treble staff features chords and eighth-note patterns. Bass staff features eighth-note runs.

55

System 4 (Measures 55-60): Treble staff features chords and eighth-note patterns. Bass staff features eighth-note runs.

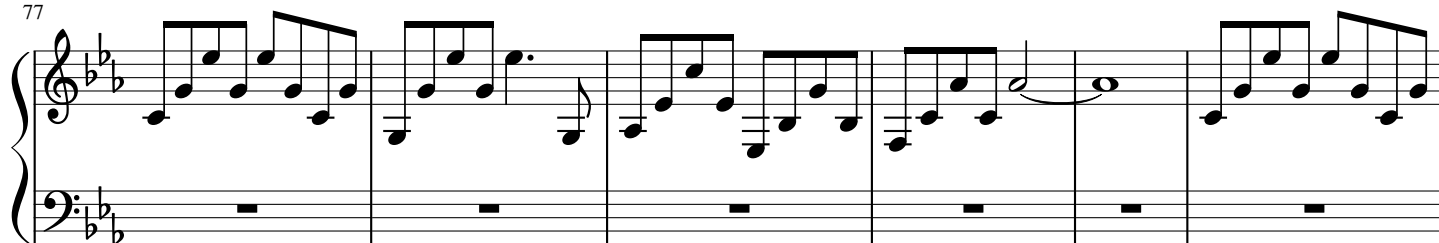
66

System 5 (Measures 66-71): Treble staff features chords and eighth-note patterns. Bass staff features eighth-note runs.

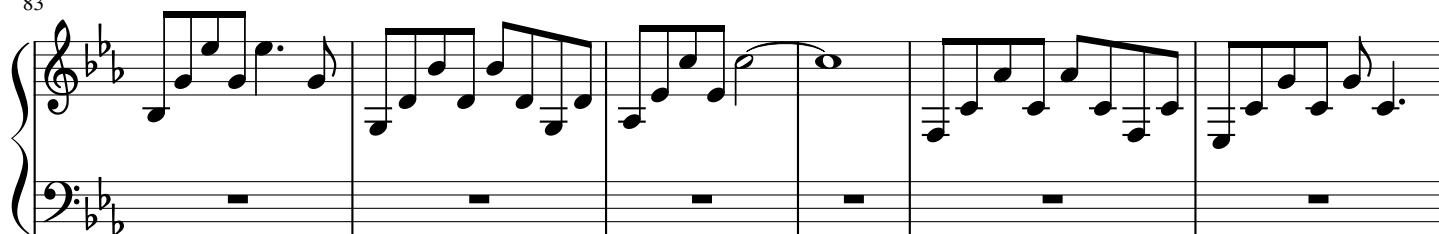
72

System 6 (Measures 72-77): Treble staff features chords and eighth-note patterns. Bass staff features eighth-note runs.

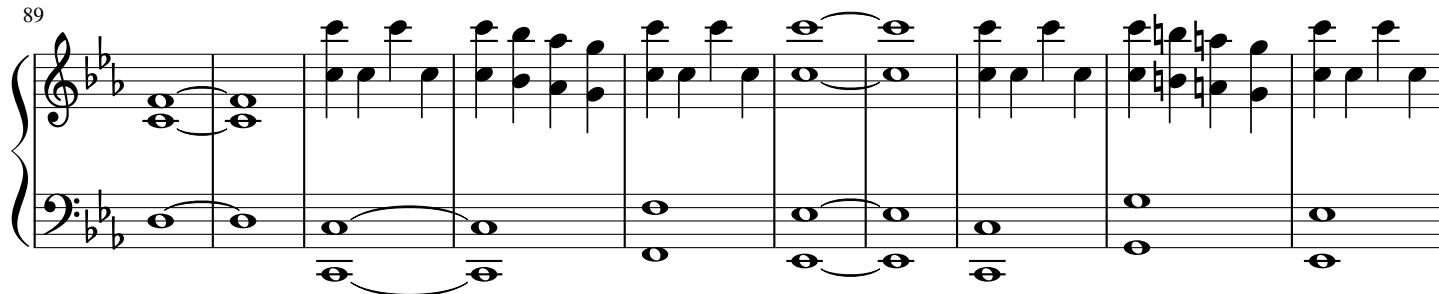
77



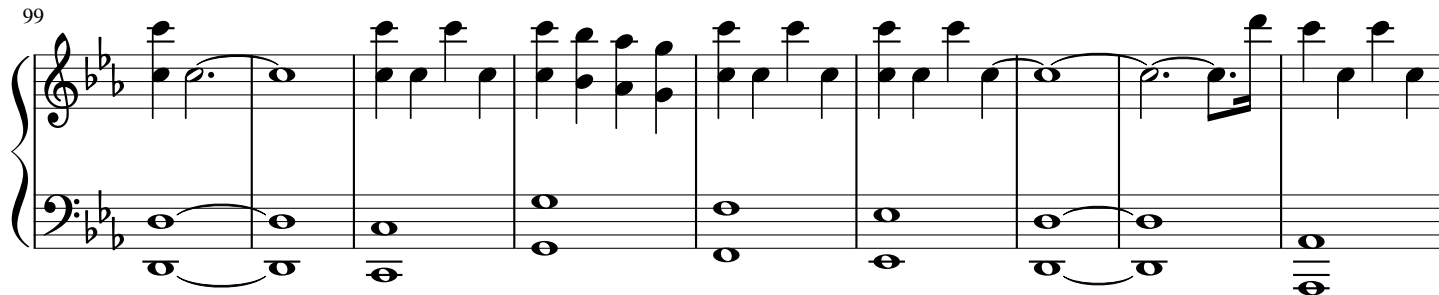
83



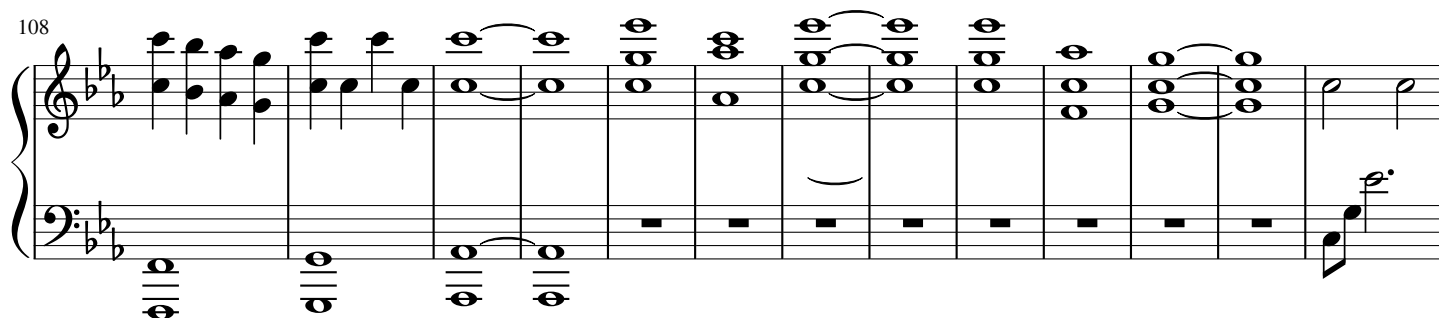
89



99



108

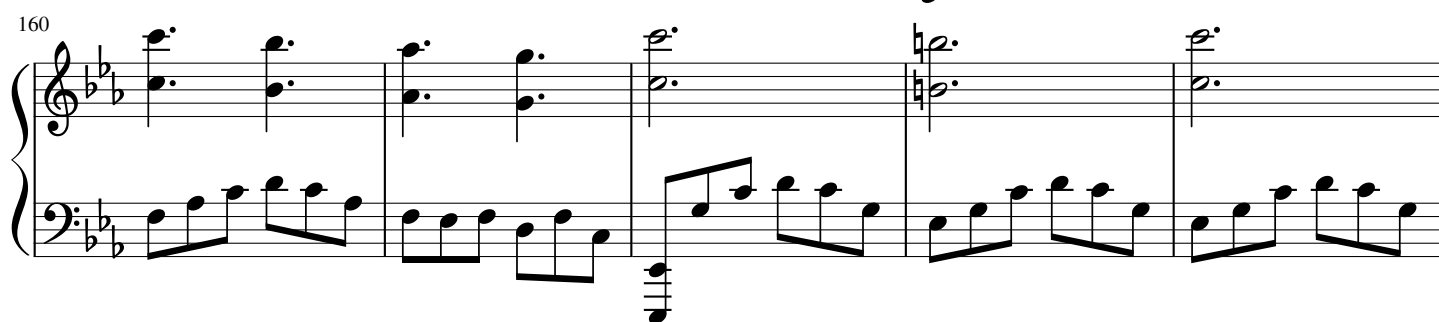
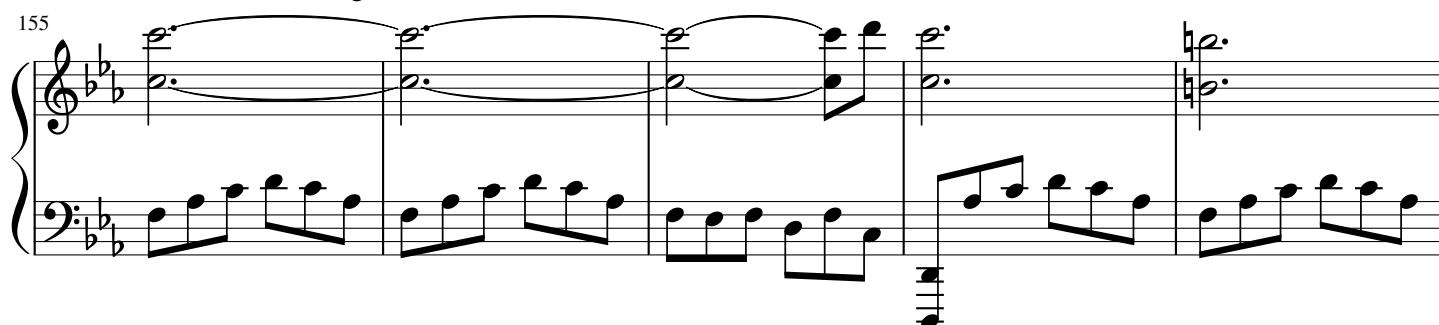
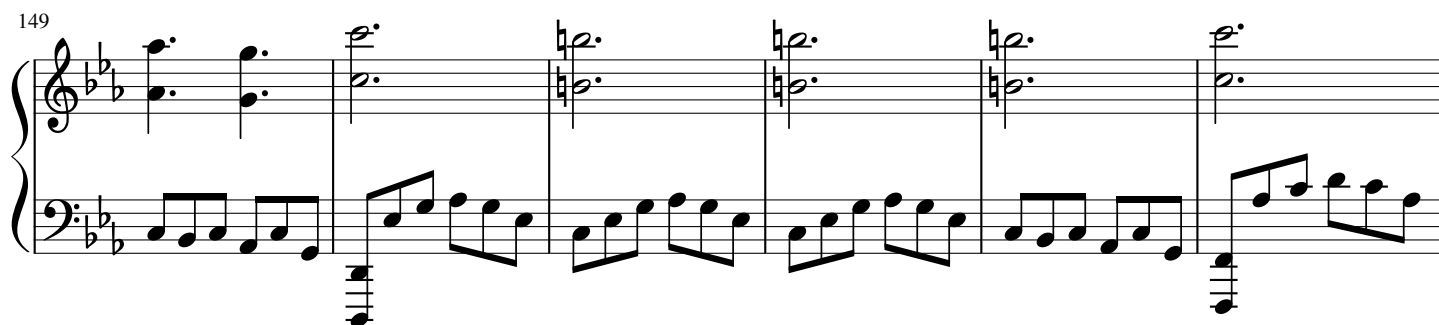
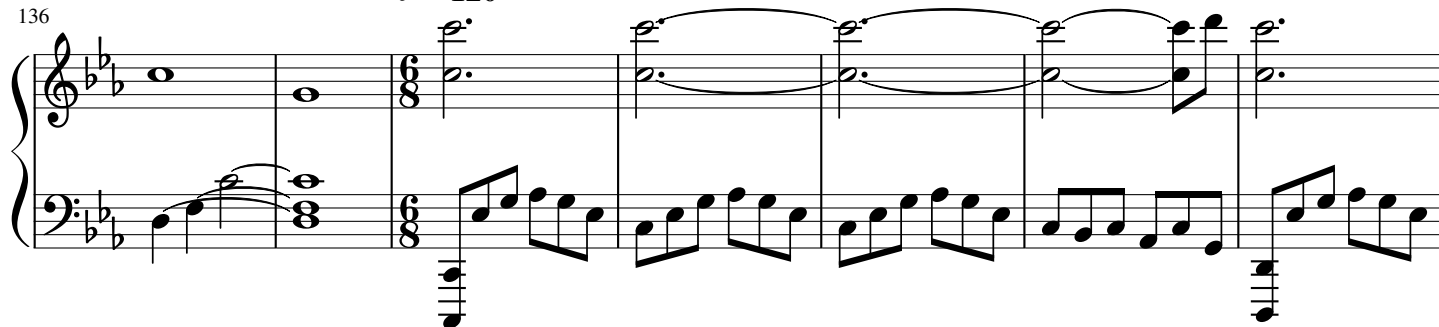


121





♩ = 120



165

170

177

183

189

195

200

Measures 200-205 of a musical score in B-flat major (two flats). The right hand features a melody of dotted half notes and quarter notes. The left hand plays a steady eighth-note accompaniment. A double bar line appears at the end of measure 205.

206

Measures 206-211 of the musical score. The right hand continues with dotted half notes, while the left hand maintains the eighth-note accompaniment. A double bar line is at the end of measure 211.

♩ = 120

212

Measures 212-219. At measure 214, the time signature changes to 4/4. The right hand plays a series of chords, and the left hand continues with eighth notes. A double bar line is at the end of measure 219.

♩ = 180

220

Measures 220-228. The right hand plays chords, and the left hand plays eighth notes. At measure 228, the time signature changes to 3/4. A double bar line is at the end of measure 228.

229

Measures 229-234. The right hand has whole rests, and the left hand continues with eighth-note accompaniment. A double bar line is at the end of measure 234.

235

Measures 235-240. The right hand has whole rests, and the left hand continues with eighth-note accompaniment. A double bar line is at the end of measure 240.

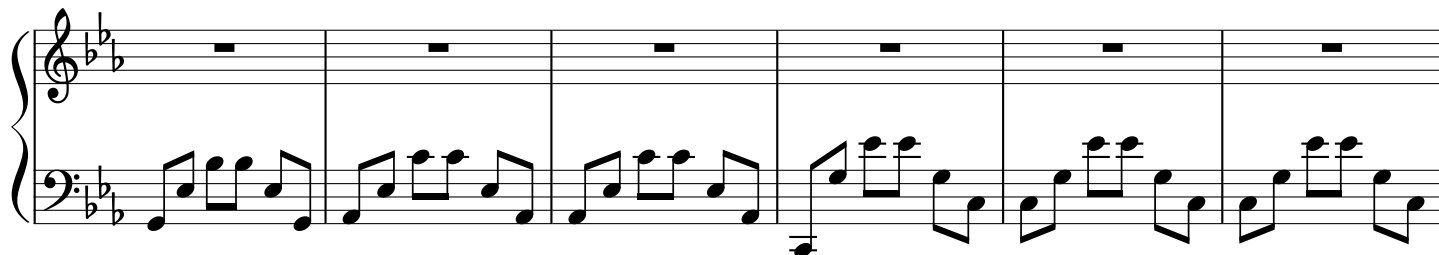
241



247



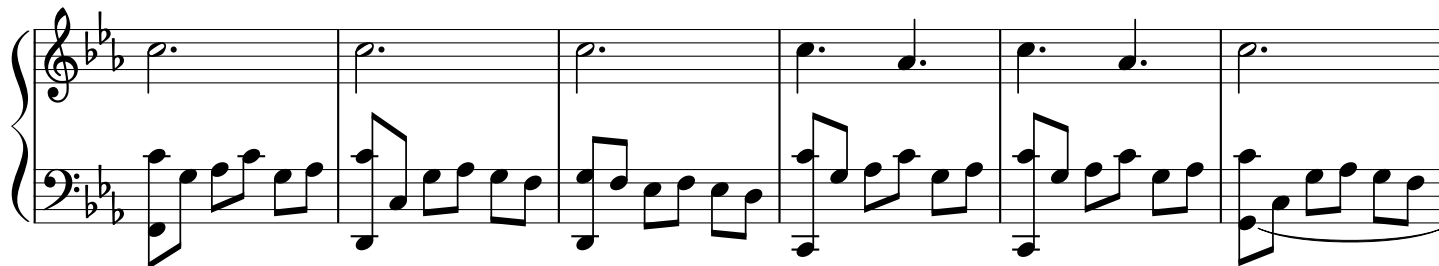
253



259



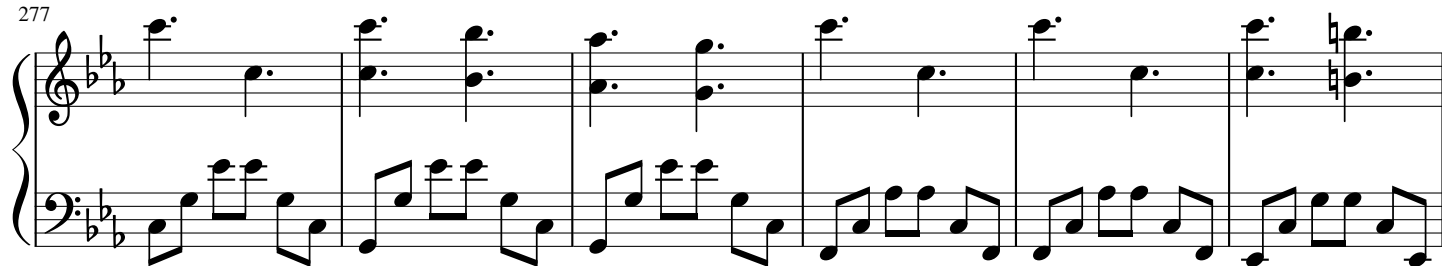
265



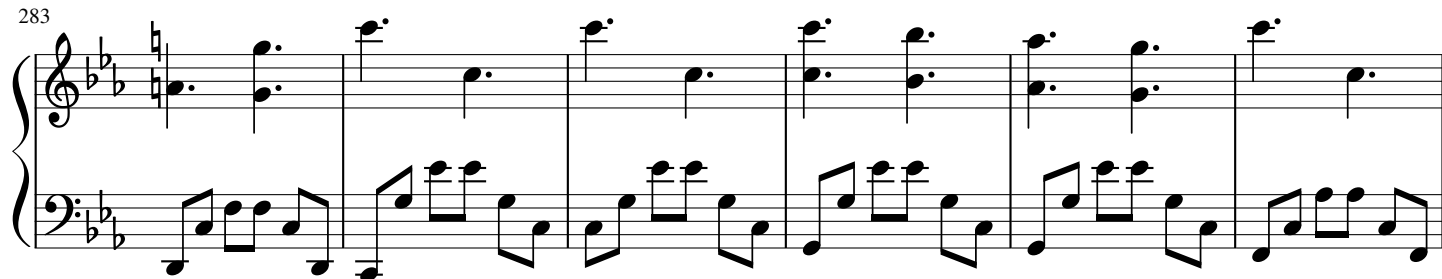
271



277



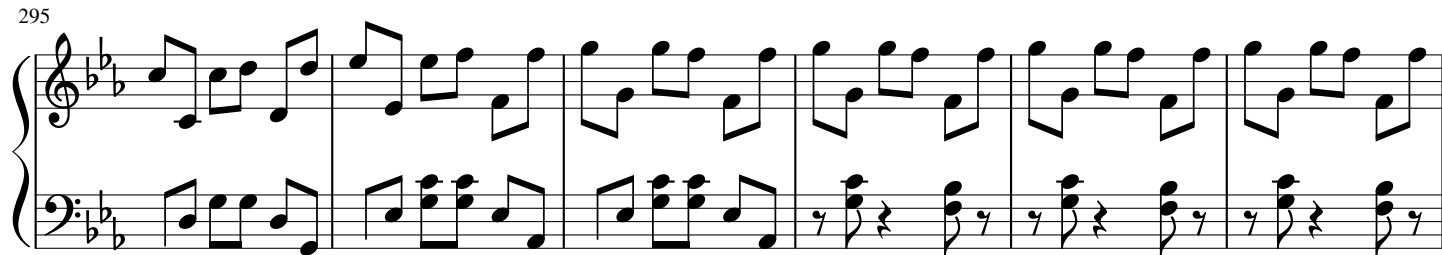
283



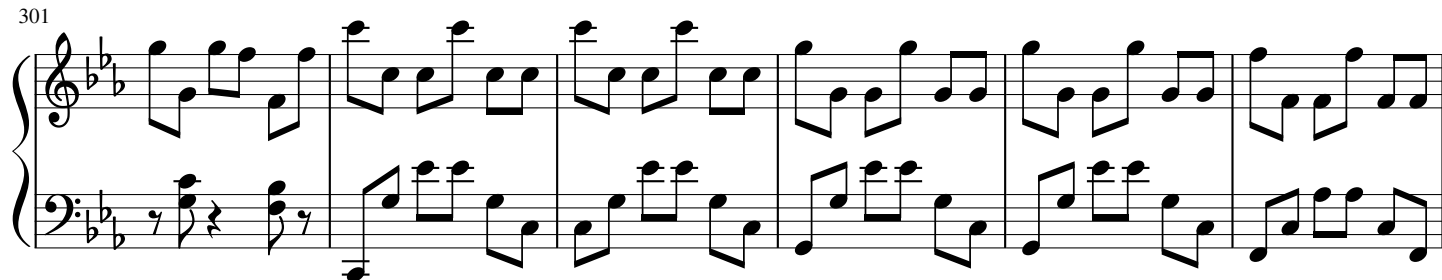
289



295



301



307

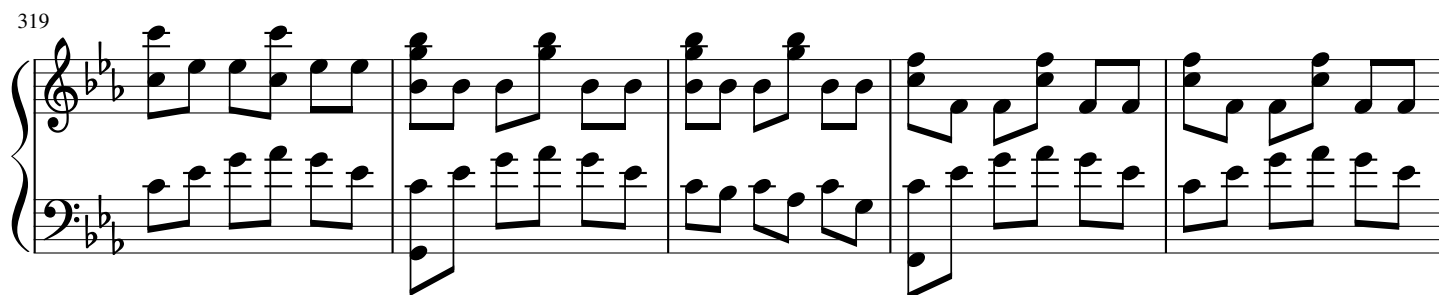




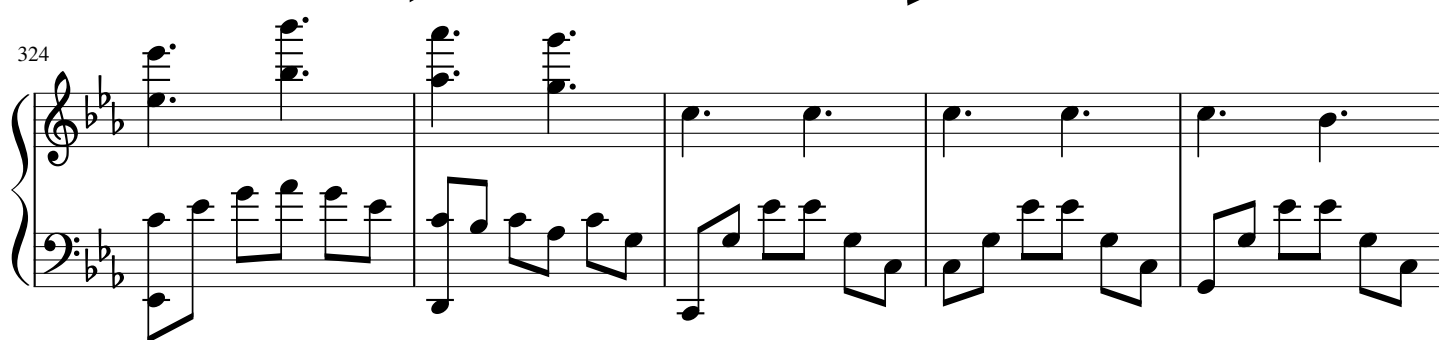
313



319



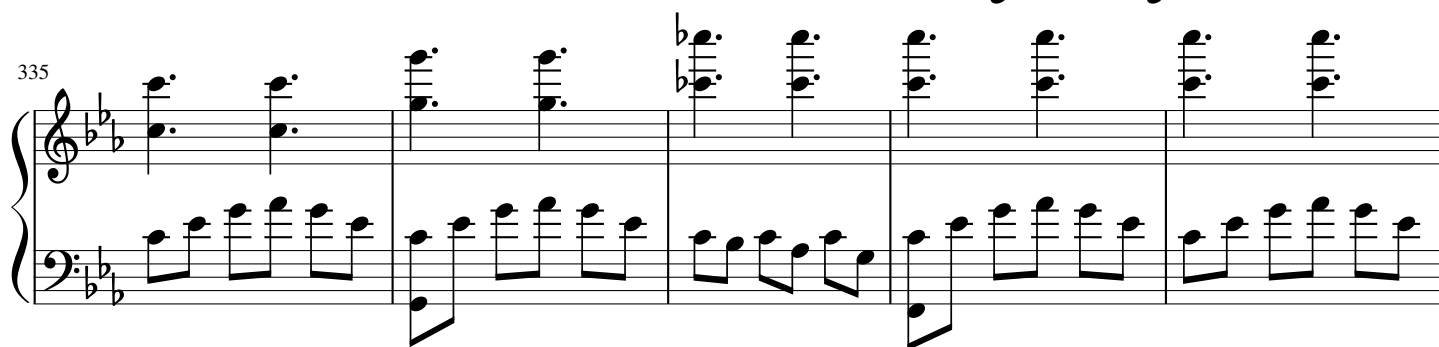
324



329



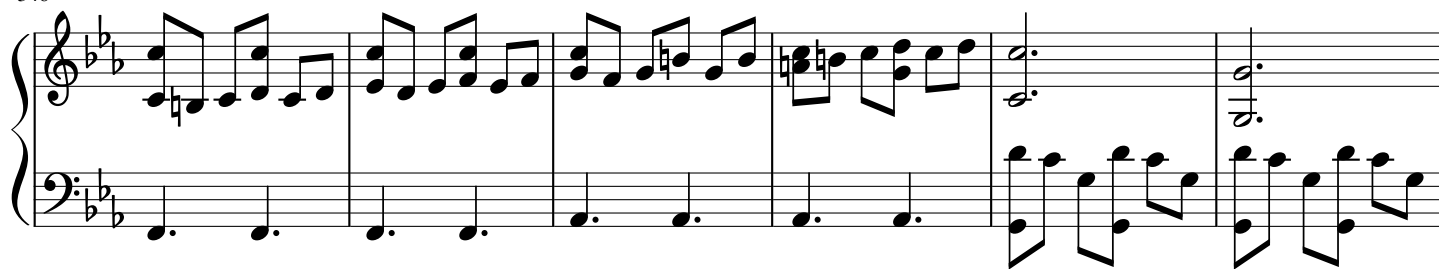
335



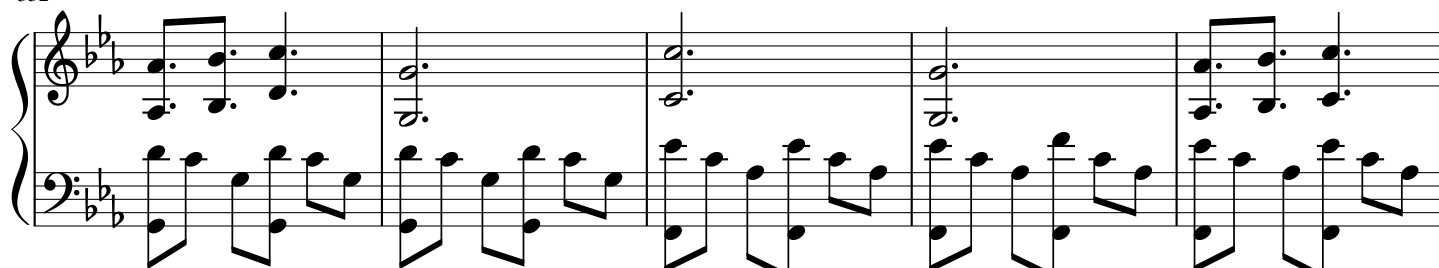
340



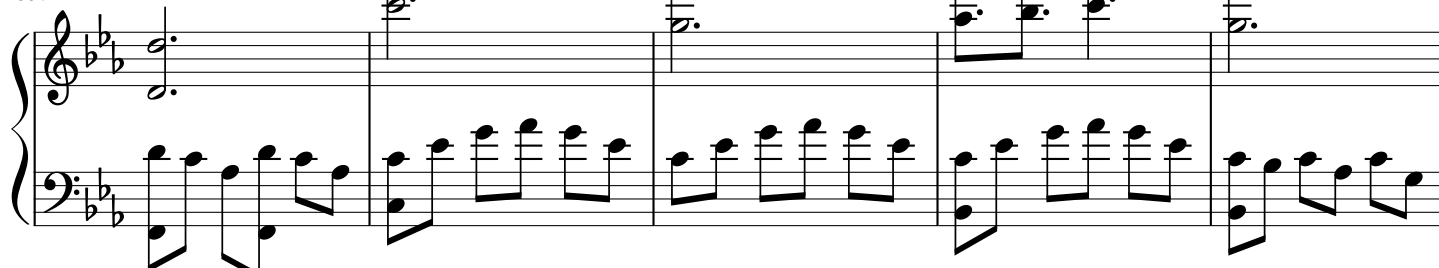
346



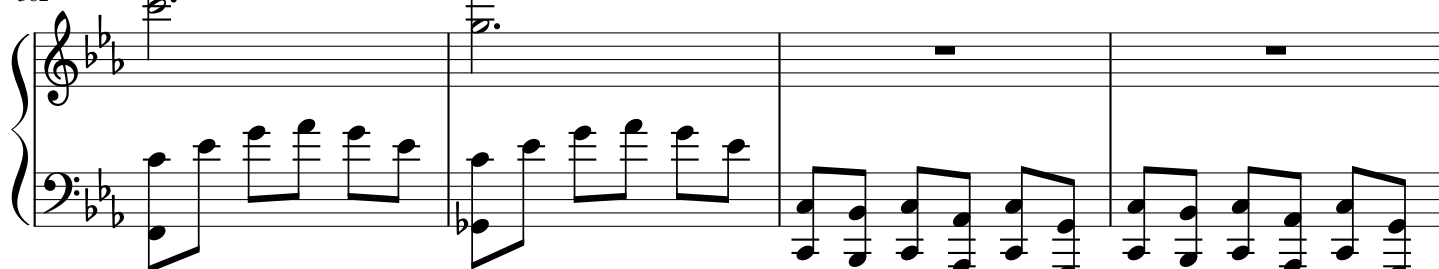
352



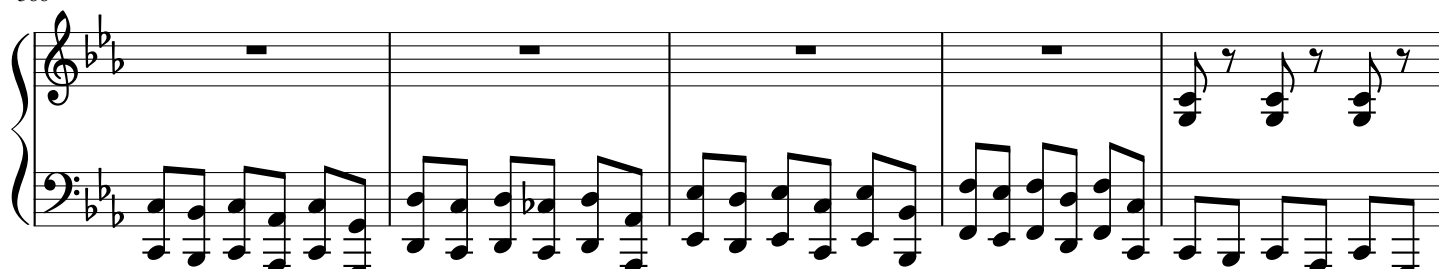
357



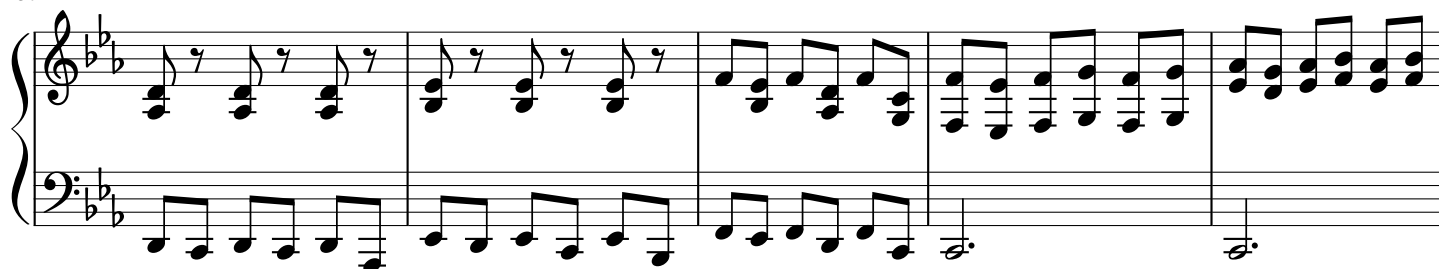
362



366



371



376



382

